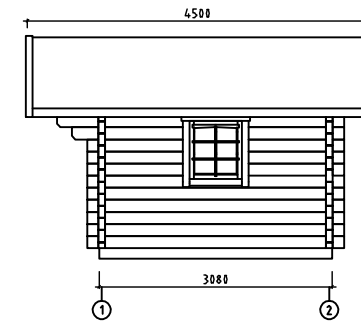
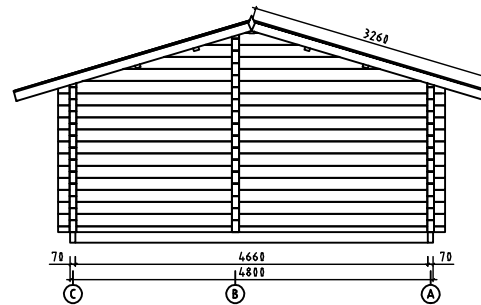
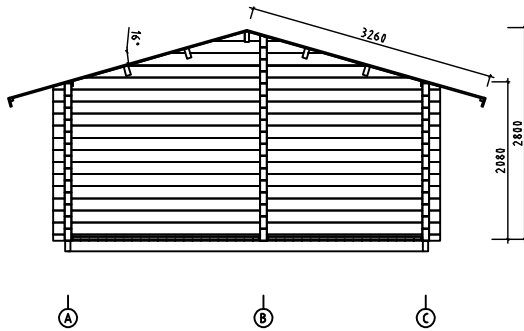
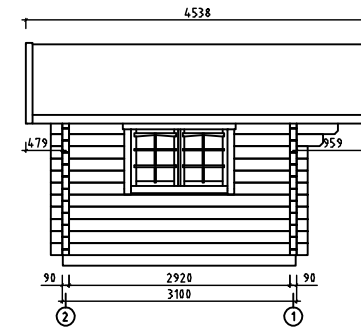
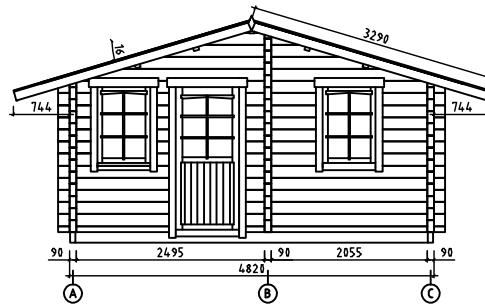
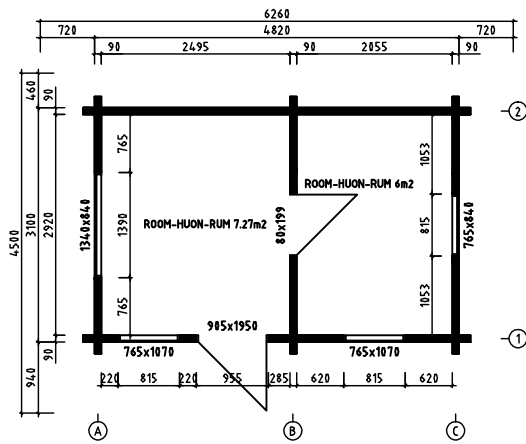
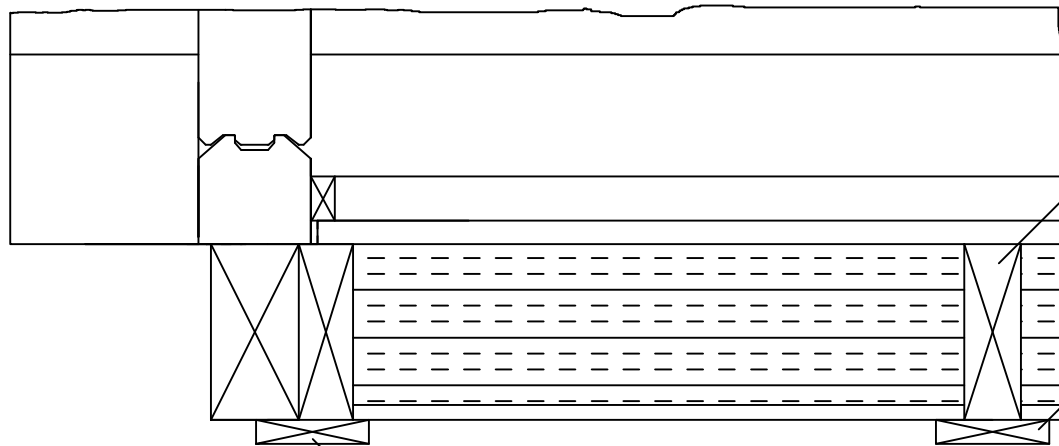
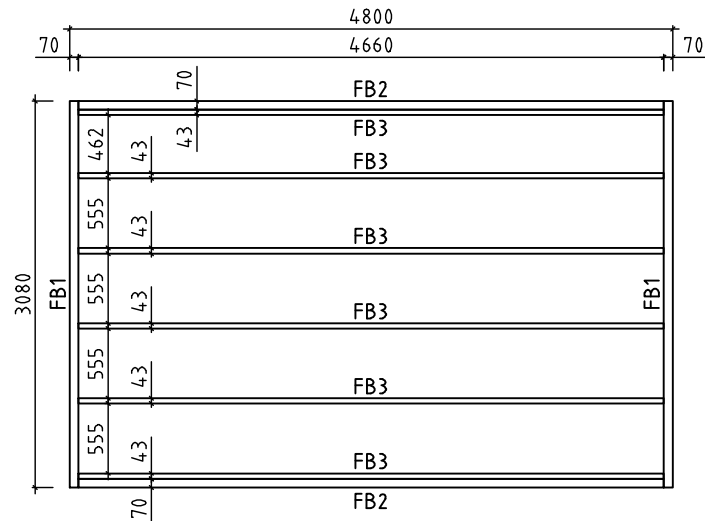


P4831-90



Date	rev.	Description
House	P4831-90	Fribo
Sheet	1	
Drawing	Views-Kuvat-Sedd	Scale 1:100
Sheet	90x160	Date 25.04.2012
Drawer		File P4831-90 Fribo.dwg



FLOORBEAMS  
LATTIAPALKIT 43x140  
GOLVBJÄLKAR

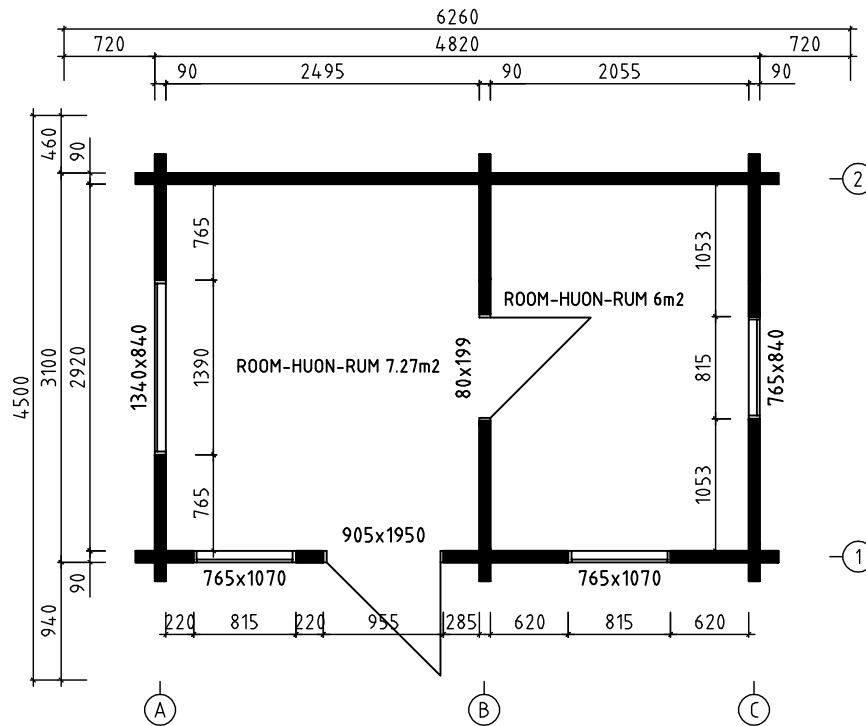
COUNTERFLOOR HOLDING BOARDS  
ROSSIPOHJAA KANNATTELEVAT LAUDAT 19x90  
BRÄDER SOM HÅLLER TROSSBOTTEN

COUNTERFLOOR HOLDING BOARDS  
ROSSIPOHJAA KANNATTELEVAT LAUDAT 19x90  
BRÄDER SOM HÅLLER TROSSBOTTEN

Date rev. Description



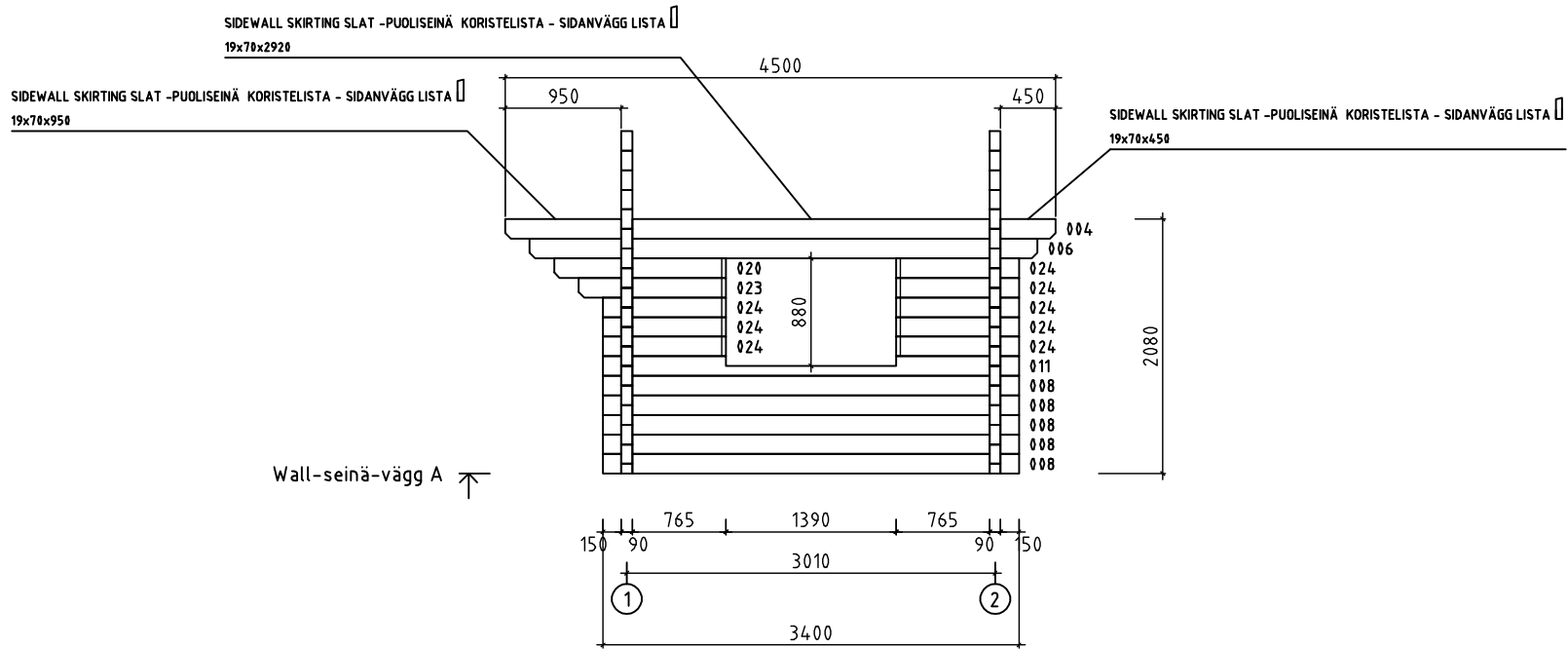
House	P4831-90 Fribo	Sheet	2
Drawing	Floorbeams/lattiapalkit/golvbjälkar	Scale	1:50
Material	70x140;43x140	Date	25.04.2012
Drawer	File		P4831-90 Fribo.dwg



Date rev. Description



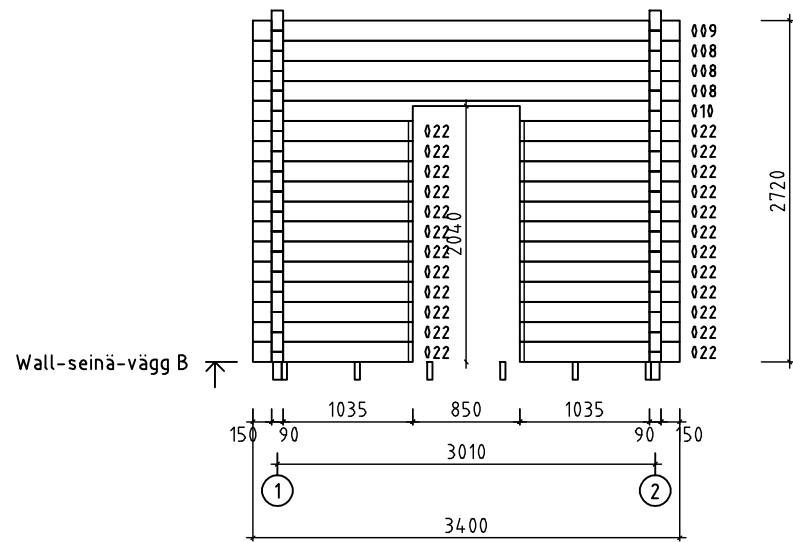
House	P4831-90 Fribo	Sheet	3
Drawing	Plan	Scale	1:50
Material	90x160	Date	25.04.2012
Drawer	File		P4831-90 Fribo.dwg



Date rev. Description



House	P4831-90 Fribo	Sheet	4
Drawing	Wall-seinä-vägg A	Scale	1:50
Material	90x160	Date	25.04.2012
Drawer		File	P4831-90 Fribo.dwg

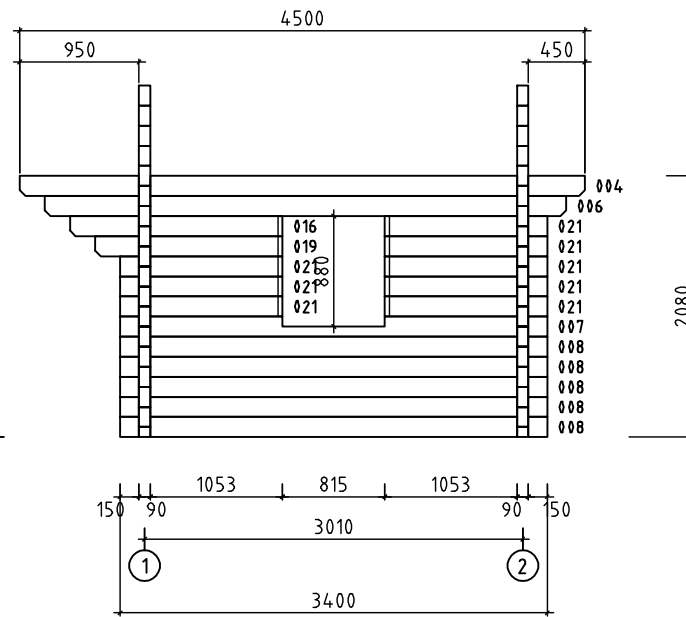


Date rev. Description



House	Wall-seinä-vägg B	Sheet	5
Drawing	Plan	Scale	1:50
Material	90x160	Date	25.04.2012
Drawer	File P4831-90 Fribo.dwg		

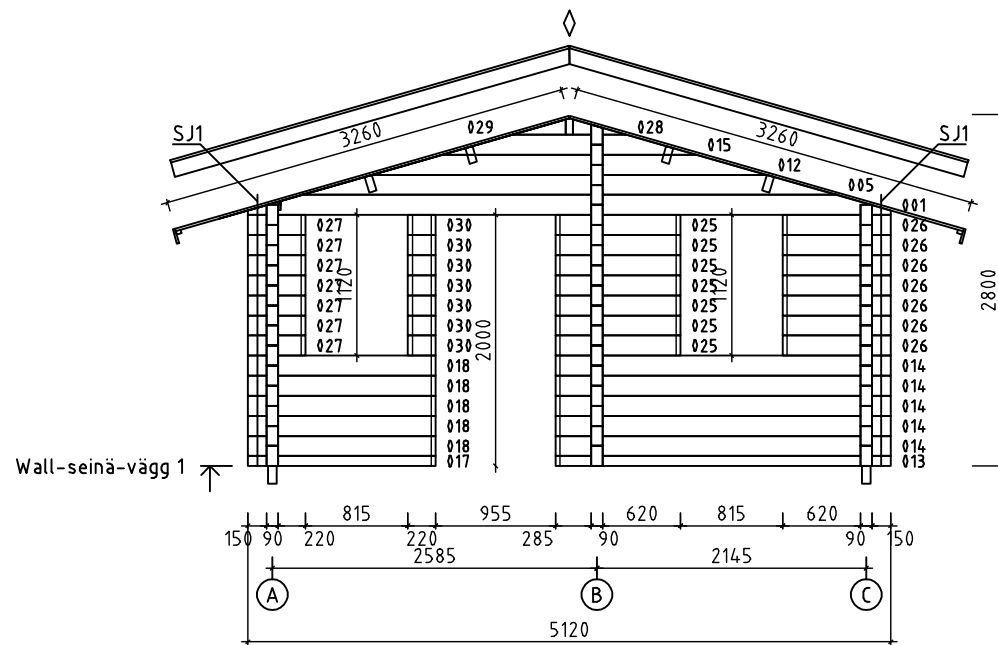
Wall-seinä-vägg C ↗



Date rev. Description



House	P4831-90 Fribo	Sheet	6
Drawing	Wall-seinä-vägg C	Scale	1:50
Material	90x160	Date	25.04.2012
Drawer		File	P4831-90 Fribo.dwg

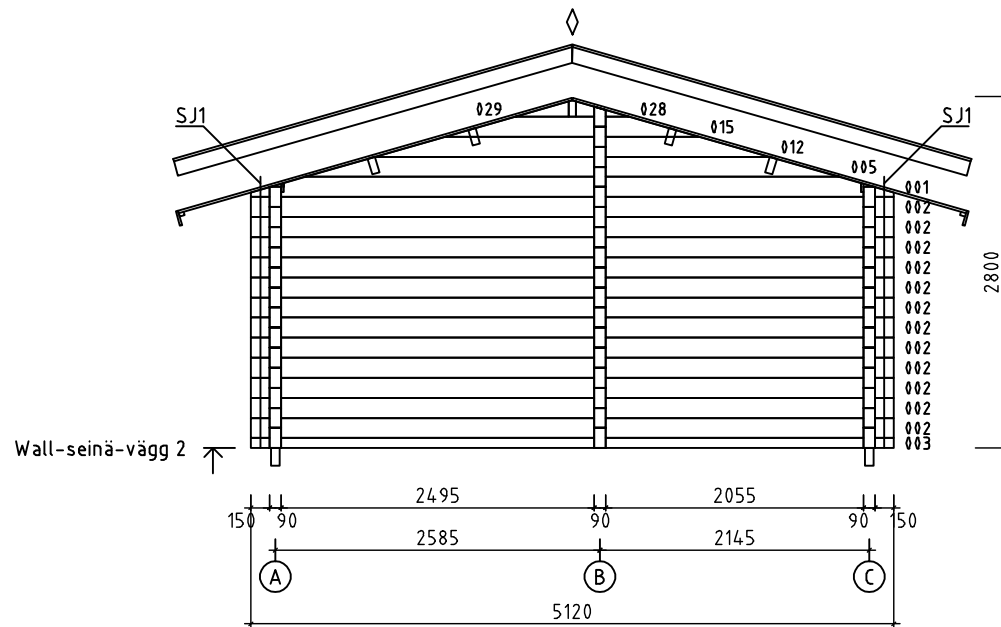


Date rev. Description



House	P4831-90 Fribo	Sheet	7
Drawing	Wall-seinä-vägg 1	Scale	1:50
Material	90x160	Date	25.04.2012
Drawer		File	P4831-90 Fribo.dwg


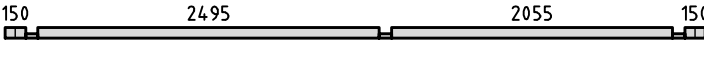

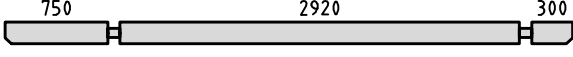
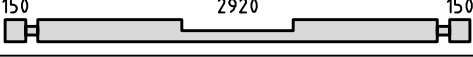
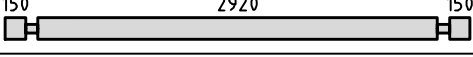
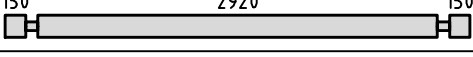
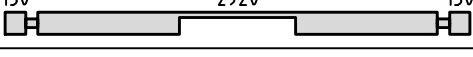
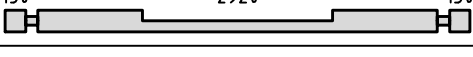
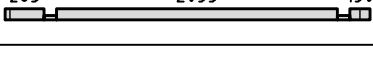


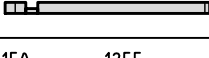
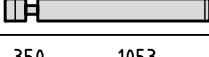
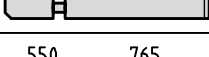
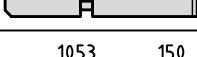
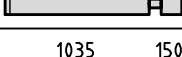
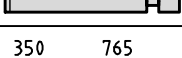
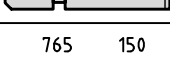
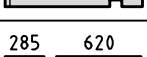
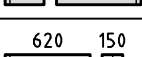
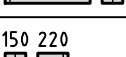







Date rev. Description



House	P4831-90 Fribo	Sheet	8
Drawing	Wall-seinä-vägg 2	Scale	1:50
Material	90x160	Date	25.04.2012
Drawer		File	P4831-90 Fribo.dwg

Pos	P4831-90 Fribo	Pcs.	Profile (mm)	L (mm)
002		12	90x160	5120
003		1	90x80	5120
004		2	90x160	4500
006		2	90x160	4150
007		1	90x160	3400
008		13	90x160	3400
009		1	90x160	3400
010		1	90x160	3400
011		1	90x160	3400
013		1	90x80	2670
014		5	90x160	2670
016		1	90x160	1693
017		1	90x80	1495
018		5	90x160	1495
019		1	90x160	1493
020		1	90x160	1405
021		8	90x160	1293
022		24	90x160	1275
023		1	90x160	1205
024		8	90x160	1005
025		7	90x160	995
026		7	90x160	860
027		7	90x160	460
030		7	90x160	220
AB	ASSEMBLING BEAM-ASENNUSLAUTA-MONTERINGBRÄDE 	2	90x160	300



Kood P4831-90 Fribo

Materjal

File P4831-90 Fribo.dwg

Leht 1/3

Pos	P4831-90 Fribo	Pcs.	Profile (mm)	L (mm)
W1-1		1	70x761	5120
W2-1		1	70x761	5120
FB2	FLOORBEAMS-LATTIAPALKIT-GOLVBJÄLKAR 	2	70x140	4660
FB1	FLOORBEAMS-LATTIAPALKIT-GOLVBJÄLKAR 	2	70x140	3080
FB3	FLOORBEAMS-LATTIAPALKIT-GOLVBJÄLKAR 	6	43x140	4660
PR1	PURLINS - KATTO-ORRET- TAKÅSAR 950 2920 450 	4	70x140	4500
PR2	PURLINS - KATTO-ORRET- TAKÅSAR 950 2920 450 	1	70x140	4500
	FLOORBOARD - LATTIALAUTA - GOLVBRÄDE  or-tai-eller	40 53	19x114 19x88	2910
	ROOFBOARD - KATTOLAUTAT - TAKBRÄDE  or-tai-eller	80+1 104+1	19x114 19x88	3260
	SKIRTING SLAT - LATTIALISTA - GOLVLIST		19x35	21000
	GABLE BOARD - KAAPELILAUTA - VINDBRÄDE  3300 3266 34	4	19x120	3300
	EAVE BOARD - RÄYSTÄSLAUTA - TAKFOTBRÄDE	2	19x120	4500
	EAVE SLAT - RÄYSTÄSLISTA - TAKFOT	2	30x40	4500
	BOARD MATCHING WITH GABLE BOARD - KAAPELILAUTA VASTAVA LAUTA - - BRÄDE OVANPÅ VINDBRÄDE	4	19x90	3300
	DECORATIVE - KORISTE - PRYDNADS	2	19x90	200
	SIDEWALL SKIRTING SLAT -PUOLISEINÄ KORISTELISTA - SIDANVÄGG LISTA	2 2 2	19x70 19x70 19x70	2920 950 450
	NAILS - NAULAT - SPIKAR  FLOORBOARD - LATTIALAUTA - GOLVBRÄDE ROOFBOARD - KATTOLAUTAT - TAKBRÄDE	770	2.5	60
	NAILS - NAULAT - SPIKAR  SKIRTING SLAT - LATTIALISTA - GOLVLIST BOARD MATCHING WITH GABLE BOARD - KAAPELILAUTA VASTAVA LAUTA - BRÄDE OVANPÅ VINDBRÄDE	60	2.0	40
	NAILS - NAULAT - SPIKAR  FLOORBEAMS - LATTIAPALKIT - GOLVBJÄLKAR	40	5.0	100
	SCREWS - RUUVIT - SKRUVAR  EAVE BOARD - RÄYSTÄSLAUTA - TAKFOTBRÄDE EAVE SLAT - RÄYSTÄSLISTA - TAKFOT GABLE BOARD - KAAPELILAUTA - VINDBRÄDE BORDER BOARDS - REUNALAUTA - FODERBRÄDE	155	3.5	50
	COUNTERFLOOR HOLDING BOARDS - ROSSIPOHJAA KANNATTELEVAT LAUDAT - - BRÄDER SOM HALLER TROSSBOTTEN	6	19x90	4660
	DOOR CROSSES/OVENLISTAT/DÖRRLIST	1		
	DOOR HANDLE/OVEN KAHVA/DÖRR HANDTAG	1		



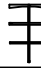
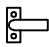
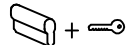


Polhus

Kood P4831-90 Fribo

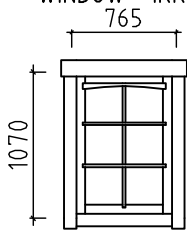
Materjal

File P4831-90 Fribo.dwg

Leht 2/3

Pos	P4831-90 Fribo	Pcs.	Profile (mm)	L (mm)
	WINDOW CROSSES/IKKUNALISTAT/FÖNSTERLIST		5	
	WINDOW HANDLE/IKKUNA KAHVA/FÖNSTER HANDTAG		5	
	DOOR LOCK+KEYS-OVENLUKKO+AVAIN-DÖRRLÄS+NYCKLAR		1+1	
	OUTSIDE DOOR BORDER BOARD SET/ULKO OVI KAITEENLAUTA SARJA/ YTTERDÖRREN GRÄNSENBRÄDER KIT (7 BOARDS/LAUTA/BRÄDER)		1	
	INSIDE DOOR BORDER BOARD SET/ SISÄOVI KAITEENLAUTA SARJA/ INTERNDÖRR GRÄNSENBRÄDER KIT (6 BOARDS/LAUTA/BRÄDER)		1	
	WINDOW BORDER BOARD SET/IKKUNA KAITEENLAUTA SARJA/ FÖNSTER GRÄNSENBRÄDER KIT (8 BOARDS/LAUTA/BRÄDER)		4	
SJ1	SCREW JOINT - KIERRETANKO-MYRSKYVARMISTUS - GÄNGTAPP-STORMSÄKRING		4	ØM10 2100
	DOOR ASSEMBLING PROFILE - OVEN ASENNUSPROFIILI - DÖRR MONTERINGSPROFIL		2 2	90x44 1990 90x44 1950
	WINDOW ASSEMBLING PROFILE - IKKUNA ASENNUSPROFIILI - FÖNSTER MONTERINGSPROFIL		4 4	90x44 1070 90x44 840

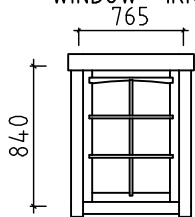
WINDOW - IKKUNAN - FÖNSTER - 765x1070 2 set - kpl - st (1 left hand - vasen käsi - vänster hand)  
(1 right hand - oikea käsi - höger hand)



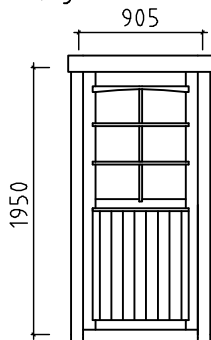
WINDOW - IKKUNAN - FÖNSTER - 1340x840 1 set - kpl - st (left hand - vasen käsi - vänster hand)



WINDOW - IKKUNAN - FÖNSTER - 765x840 1 set - kpl - st (left hand - vasen käsi - vänster hand)



DOOR - OVI - DÖRR 905x1950 1 set - kpl - st  
(right hand - oikea käsi - höger hand)



DOOR - OVI - DÖRR 800x1990 1 set - kpl - st  
(right hand - oikea käsi - höger hand)



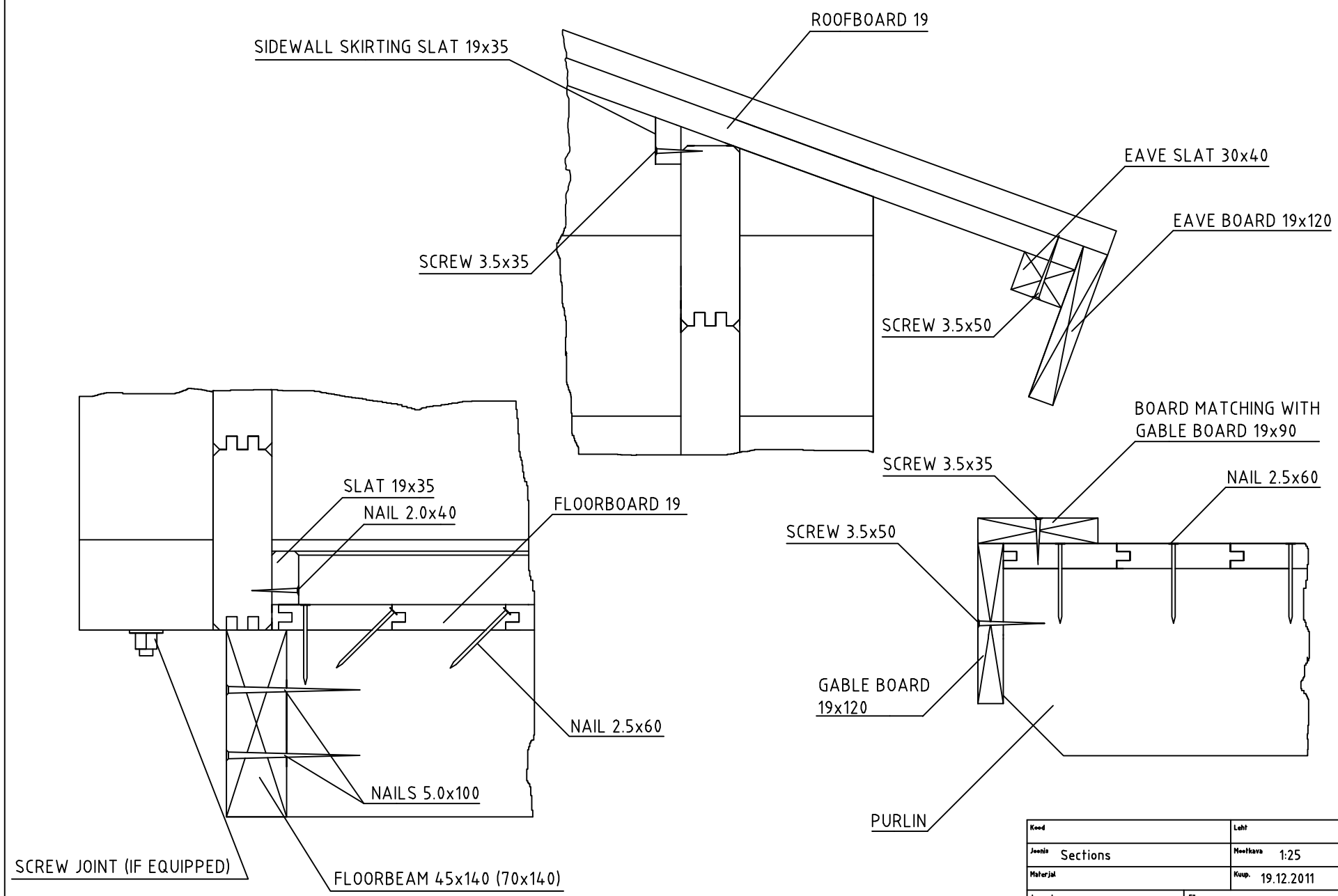
**Polhus**

Kood P4831-90 Fribo

Materjal

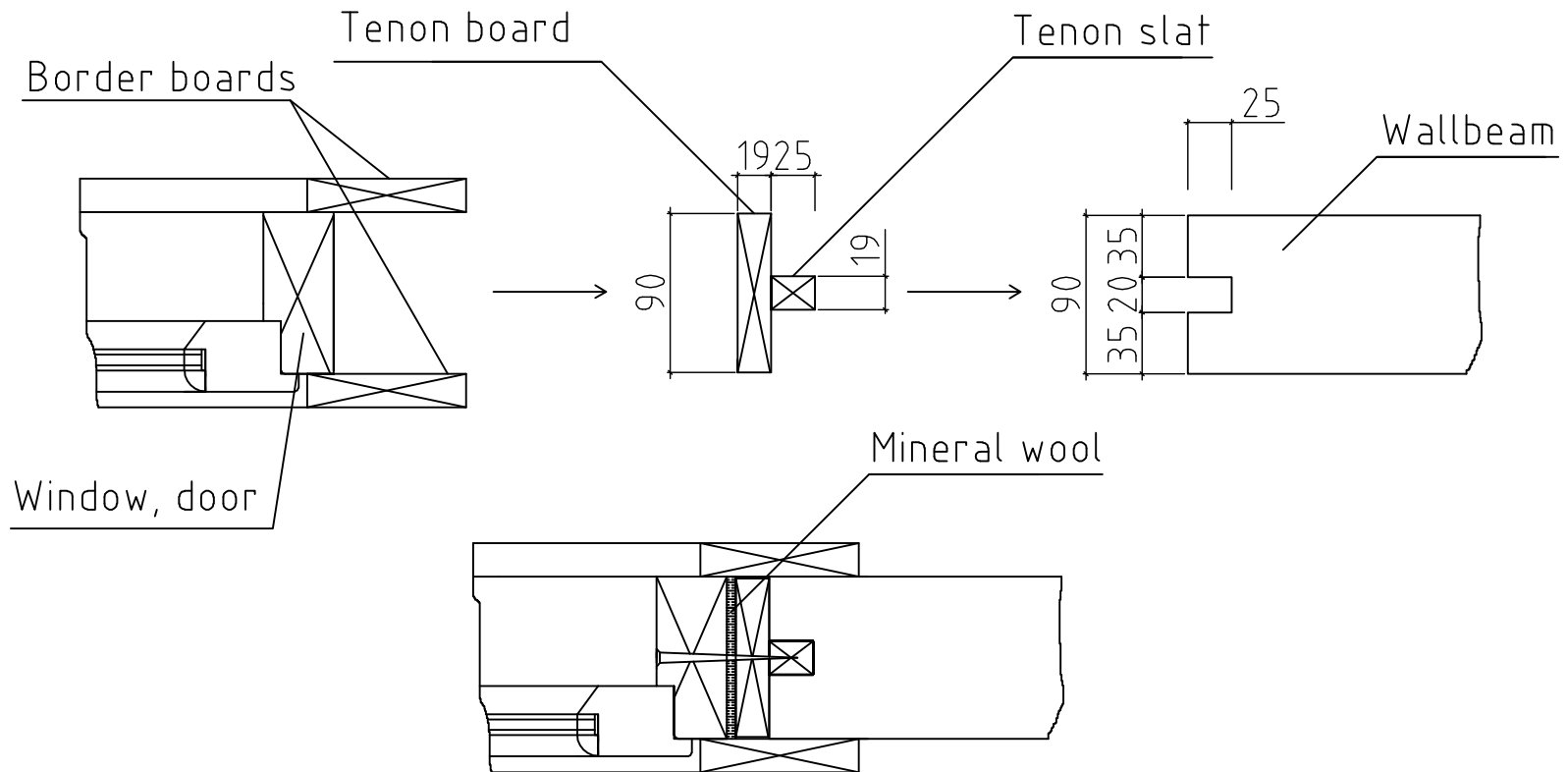
File P4831-90 Fribo.dwg

Leht 3/3



Kood		Leht	
Juoni	Sections	Muokaus	1:25
Materiaali		Kaup.	19.12.2011
Juonesta	K.Kahu	File	Sections.dwg

## DOOR-WINDOW ASSEMBLING



NB!!! Use mineral wool for isolation around the window and door.  
(isolating foam is not allowed)

NB!!! Dont screw tenon slat and board into wallbeam.

NB!!! Fix window and door into tenon slat & board (like on the drawing)